

Schede per piccoli esploratori

- GIOCHIAMO CON I 5 ELEMENTI
- COLORA E DISEGNA

M | A | C | O

MUSEO di ARTE e CULTURA ORIENTALE
di ARCIDOSSO.

INTRODUZIONE

—GIOCHIAMO CON I 5 ELEMENTI

Apprendere gli elementi naturali secondo la cultura buddhista, attraverso un percorso multisensoriale.

Realizzazione di una semplice thanka (dipinto tradizionale).

Destinatari: 1^A/5^A PRIMARIA

—IMMAGINE E SPIRITUALITÀ

Uno sguardo interiore alla rappresentazione grafica.

Utilizzare la simbologia orientale e la propria creatività per disegnare una raffigurazione ideale di sé stessi con la tecnica dell'iconografia buddhista.

Destinatari: 1^o/3^o MEDIA

—BANDIERINE DI PREGHIERA

Gli alunni apprenderanno significato e utilizzo delle bandierine di preghiera

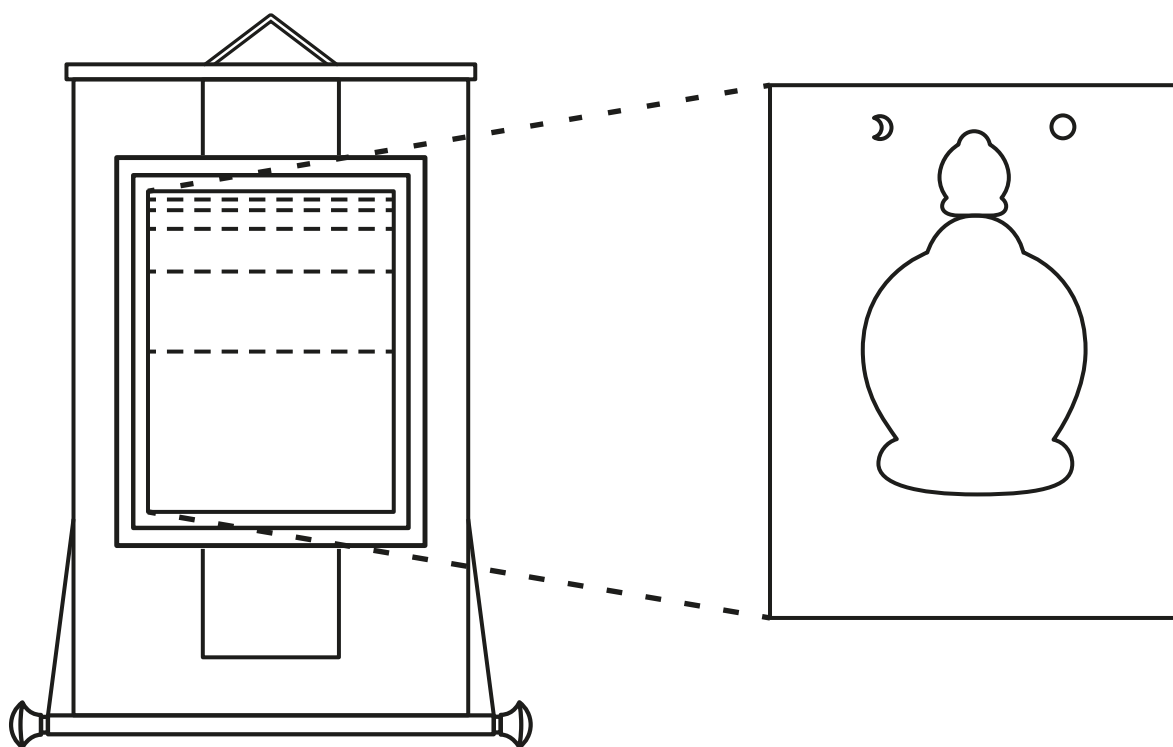
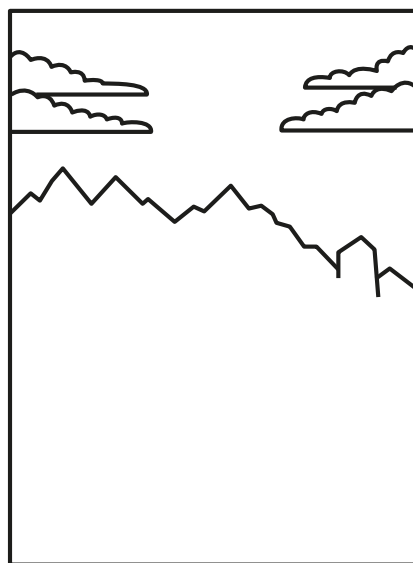
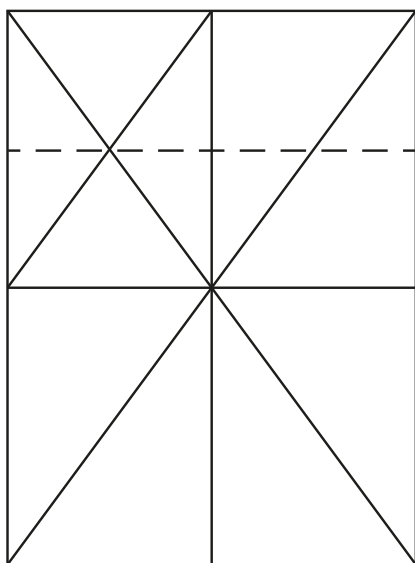
sperimentare la tecnica di stampa xilografica

Destinatari: 4^o PRIMARIA/3^o MEDIA

THANGKA

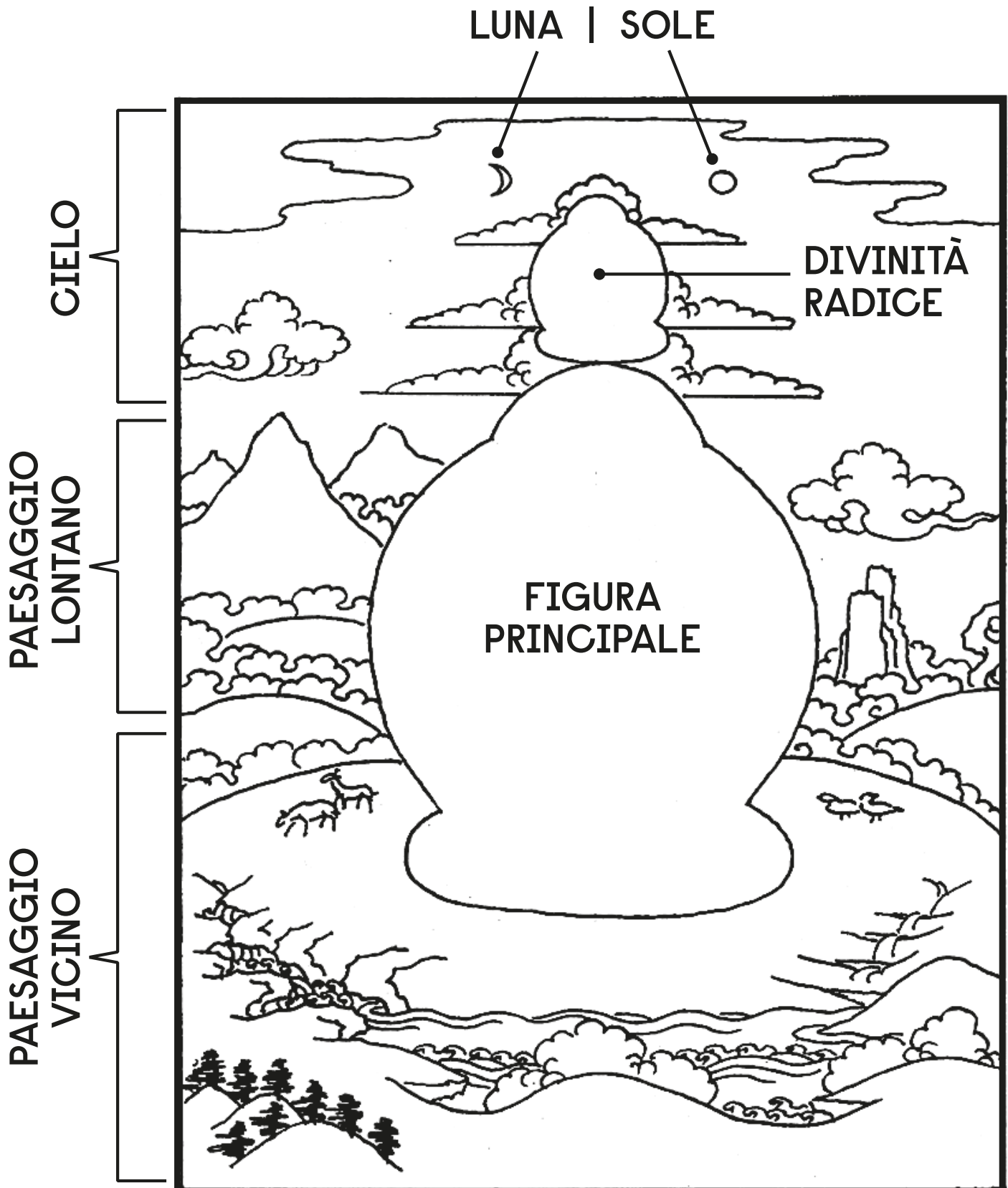
Il **Thangka** è un dipinto su tela detto anche "dipinto su rotolo"; è uno stendardo buddhista dipinto o ricamato che viene appeso in un monastero o su un altare di famiglia. In lingua tibetana la parola *than* significa "piano" e il suffisso *ka* sta per "dipinto". Il Thangka è realizzato su una tela rettangolare di cotone trattata con gesso dipinta con pigmenti minerali e vegetali, solubili in acqua e miscelati con una soluzione di colla e che può essere arrotolata.

COME SI COSTRUISCE



SPAZIO

Il thangka è lo spazio in cui si dipingono le principali figure simboliche (divinità, maestri e personaggi storici) e gli elementi che compongono la natura.



INTRODUZIONE

Il *Thangka* è lo spazio in cui si dipingono le principali figure imboliche (divinità, maestri e personaggi storici) e gli elementi che compongono la natura.

LINEE E PATTERN



segmento
curvo



linea curva



linea dritta

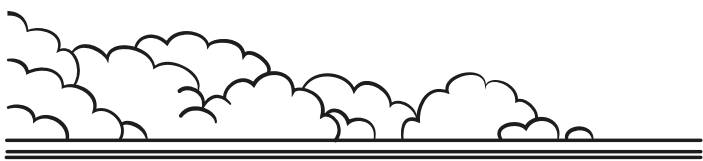
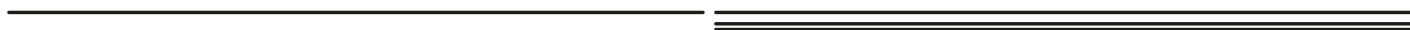


spirale

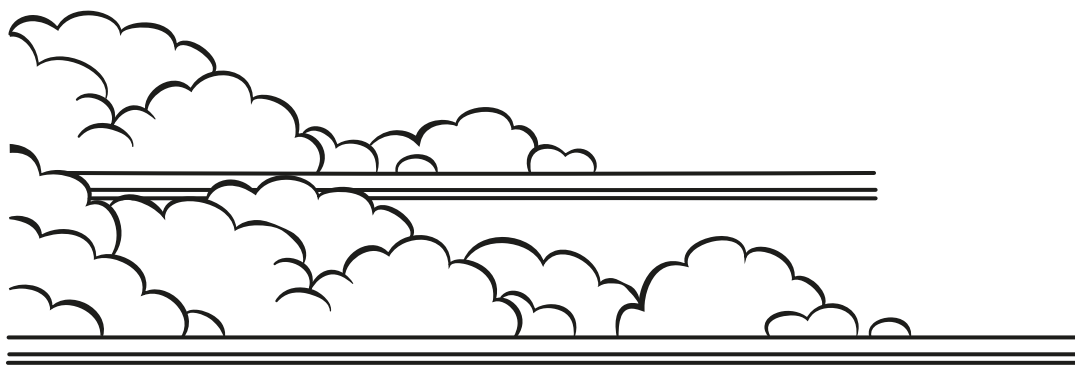
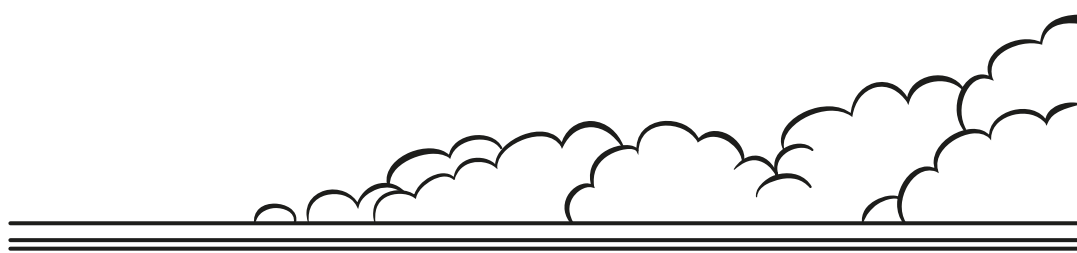
SI MUOVONO NELLO SPAZIO

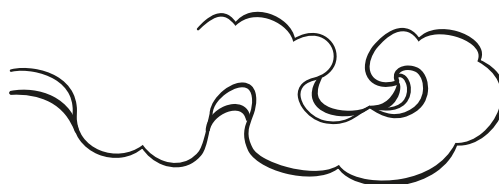
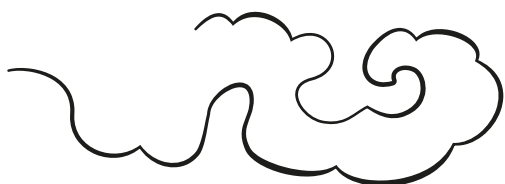


NUVOLE



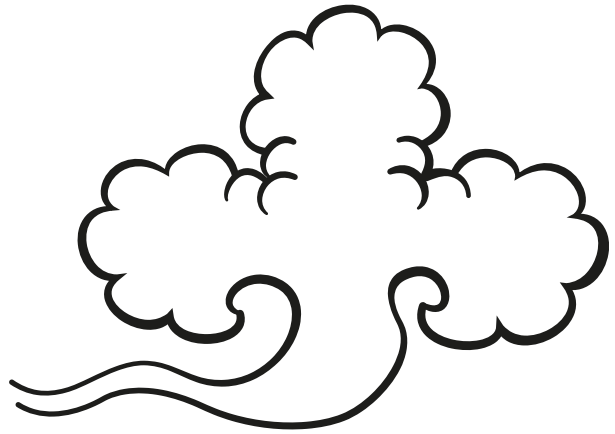
COLORA



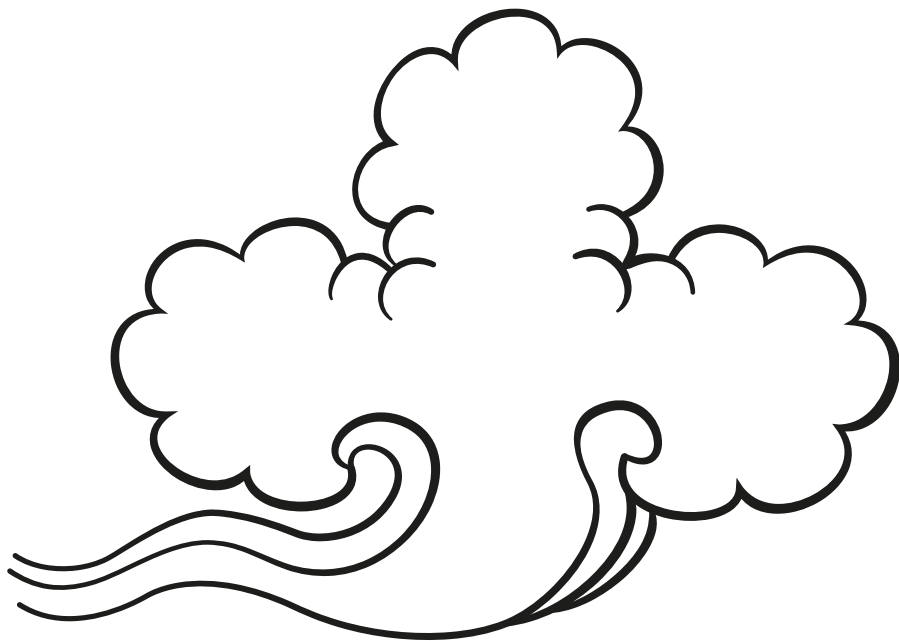


COLORA



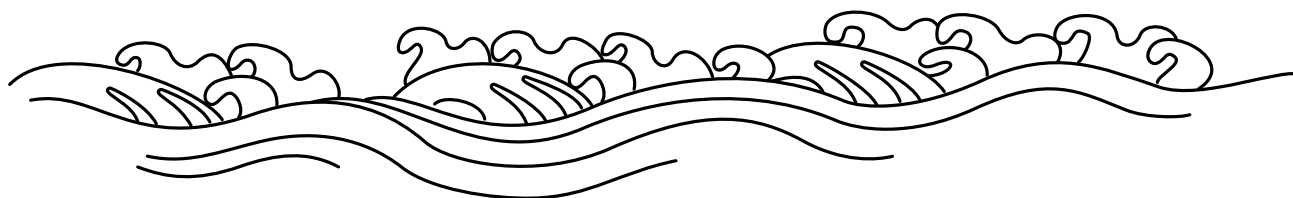
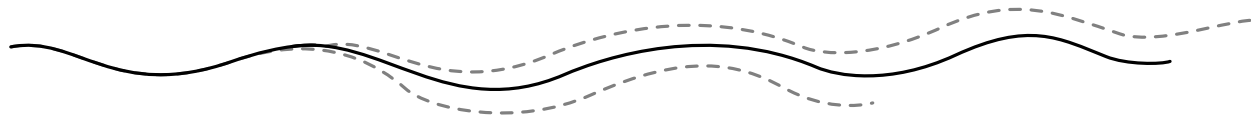


COLORA

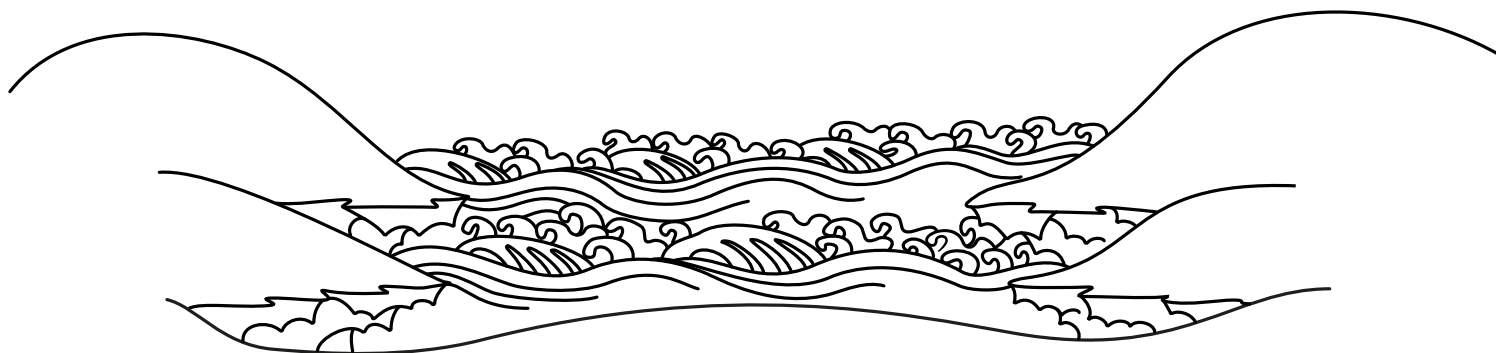


ACQUA

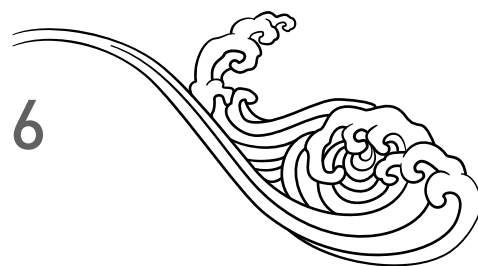
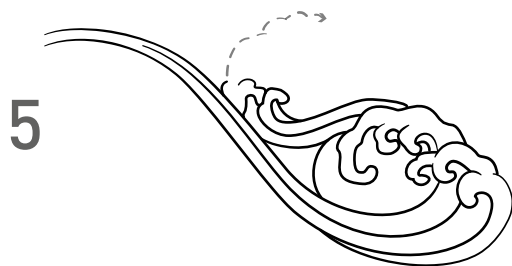
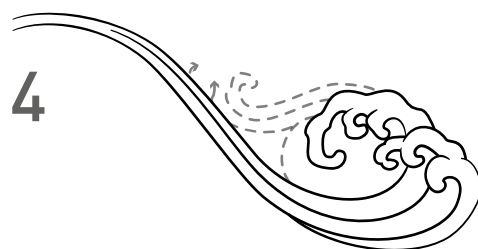
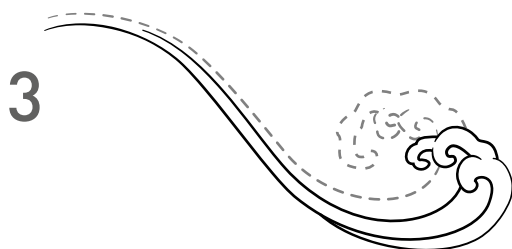
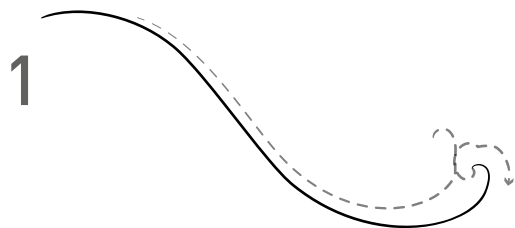
ONDE =  + 



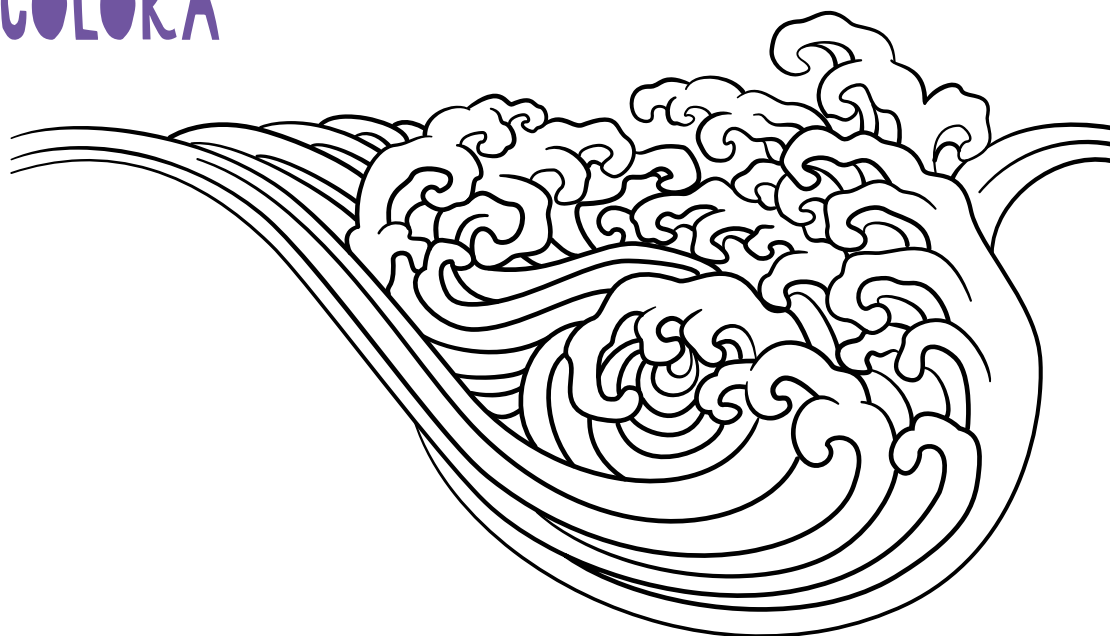
COLORA



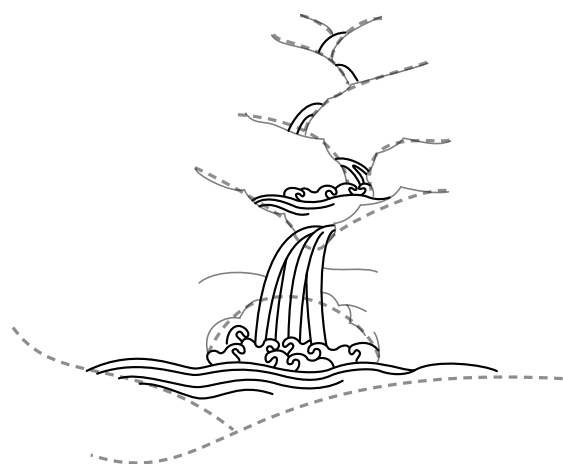
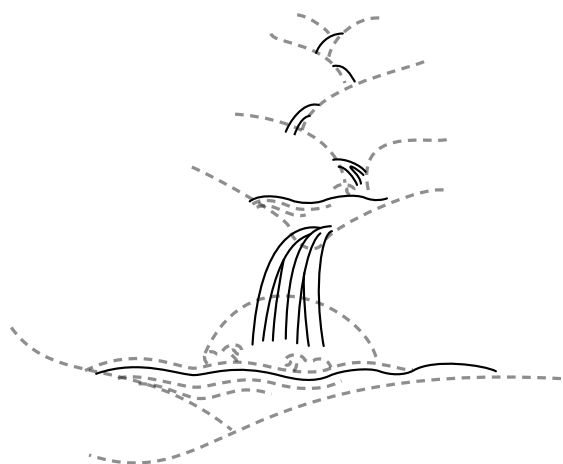
ACQUA AGITATA =  + 



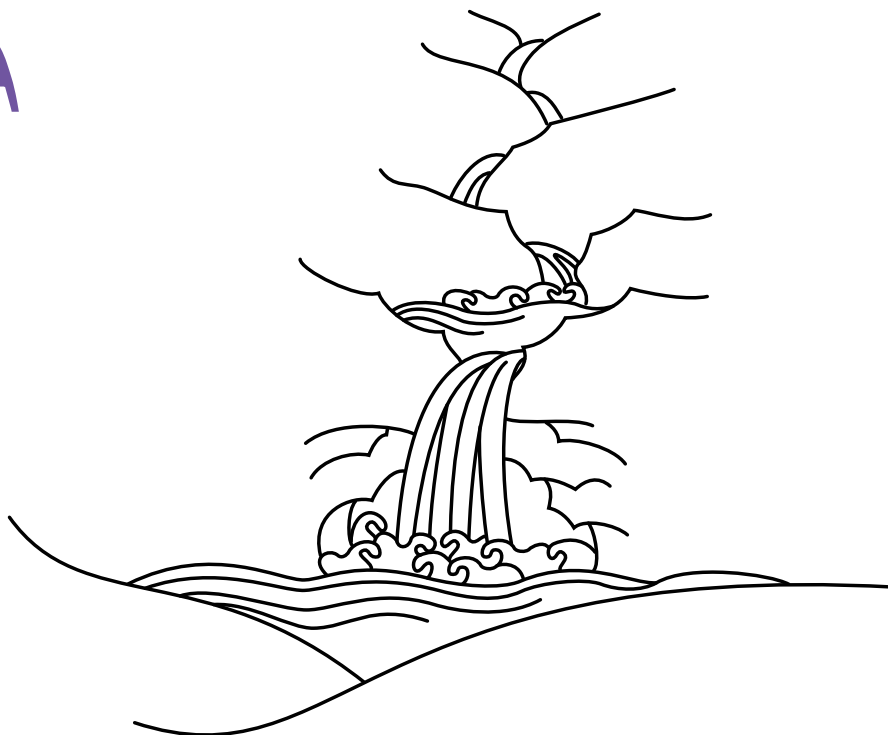
COLORA



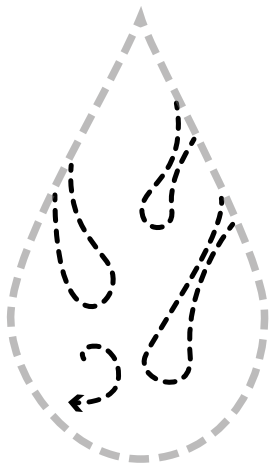
CASCATE



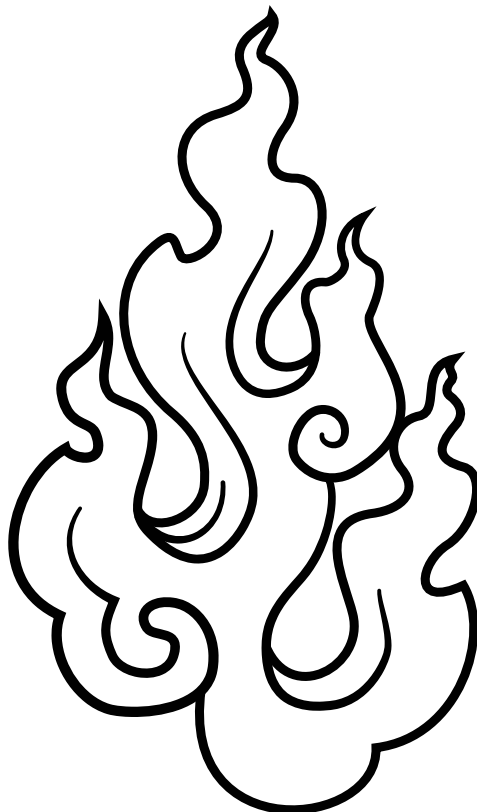
COLORA

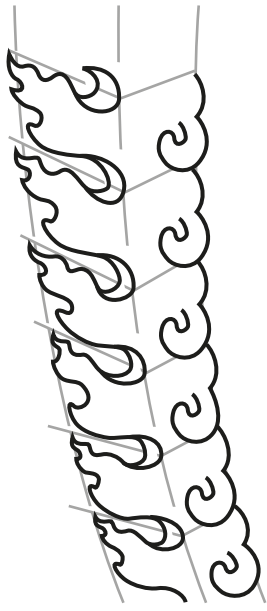
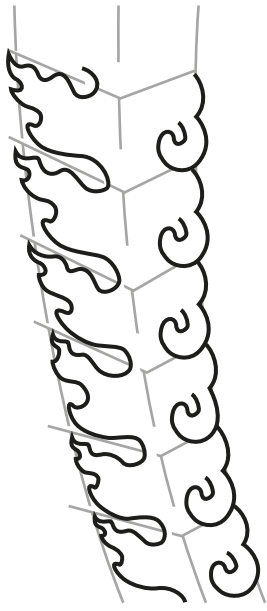
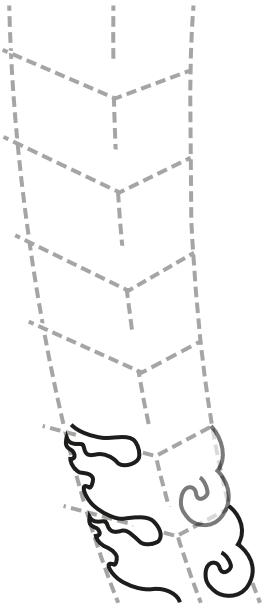


FUOCO

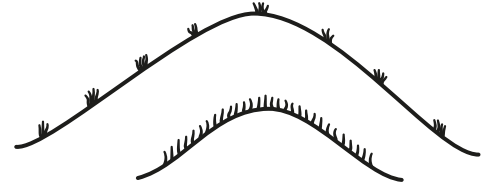
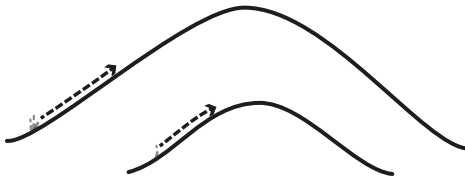
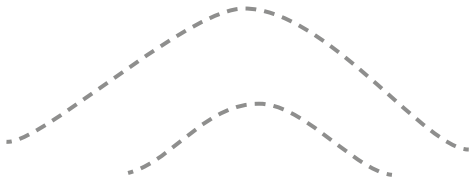
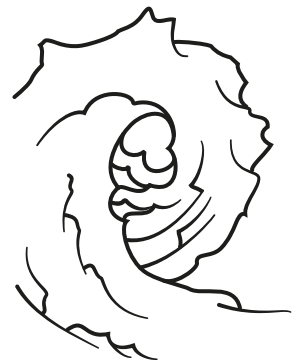
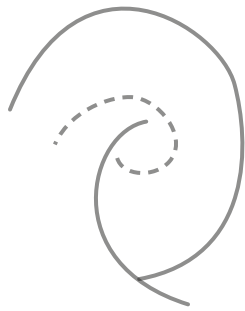
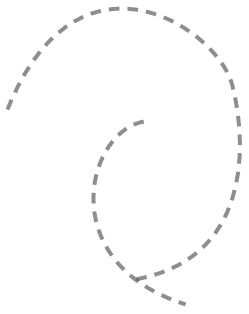


COLORA

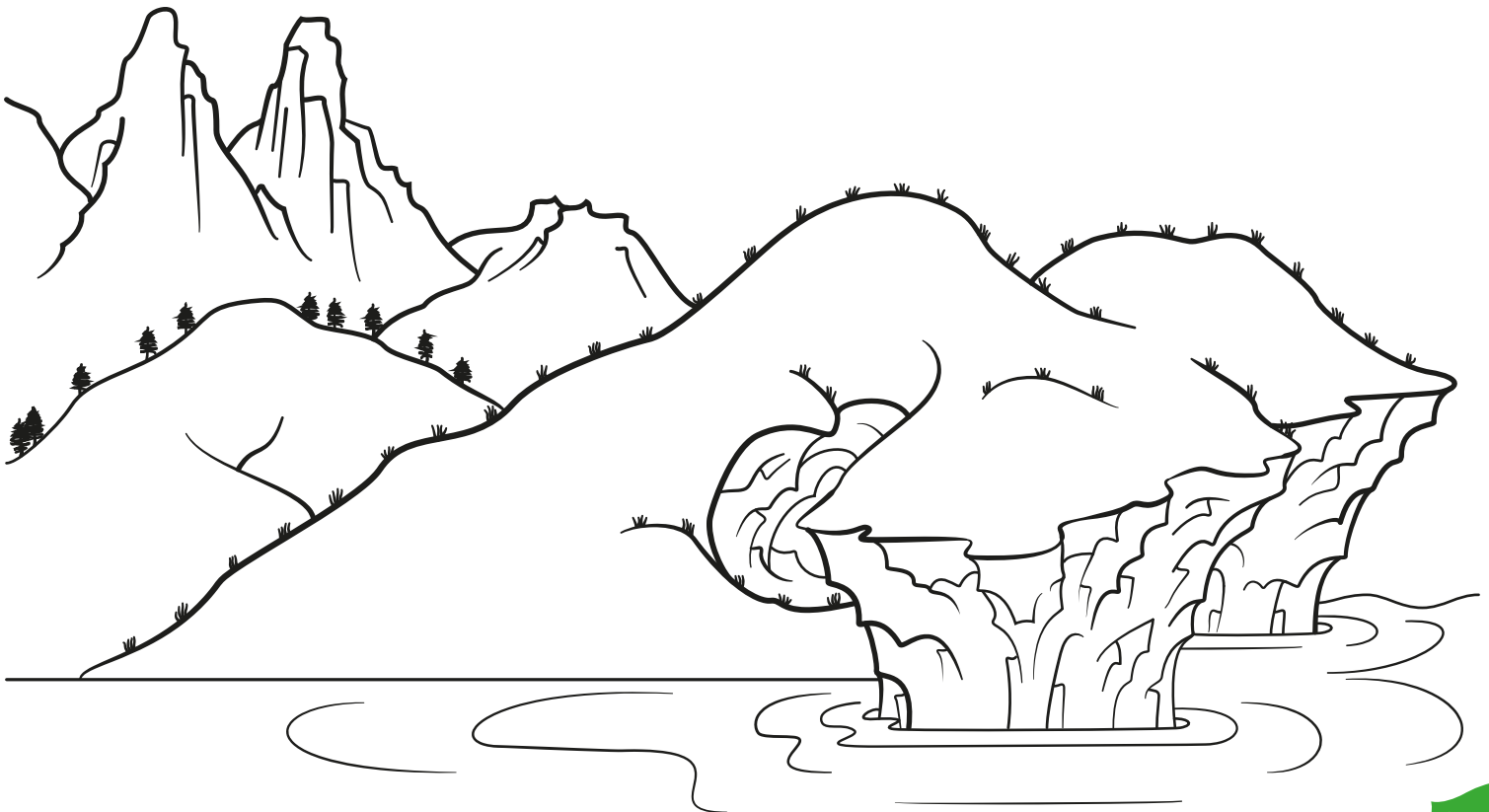




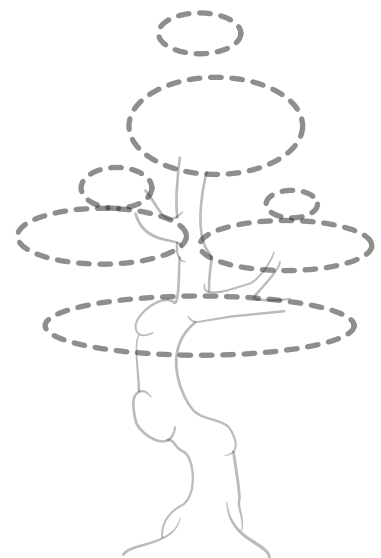
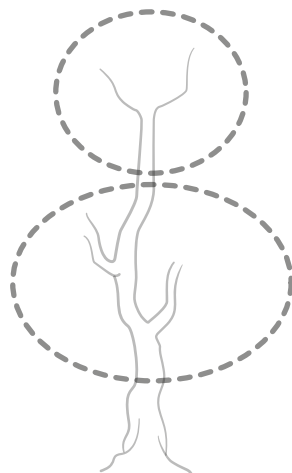
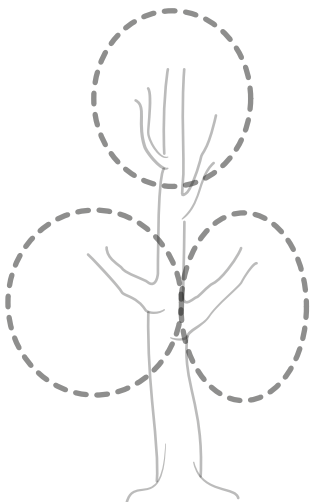
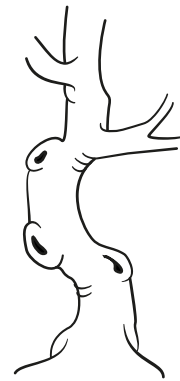
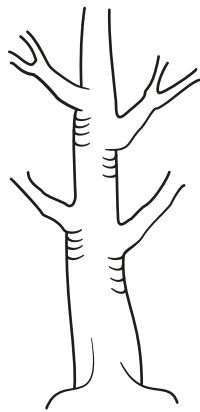
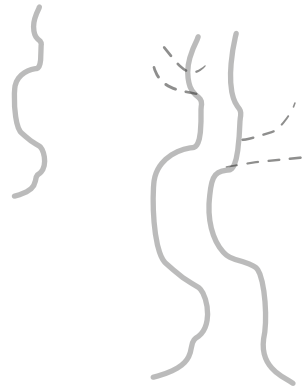
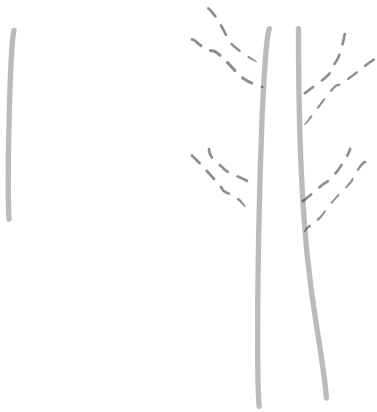
TERRA



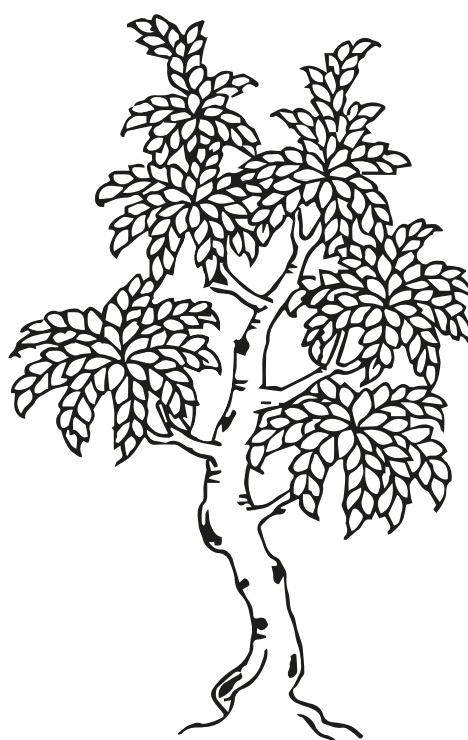
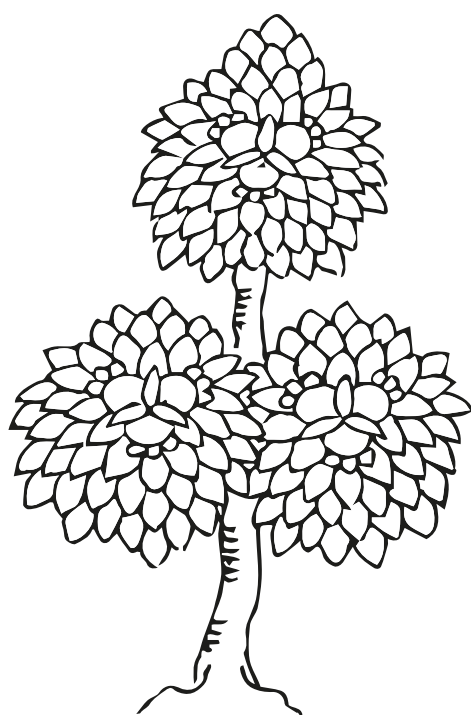
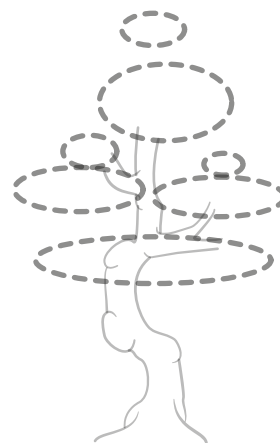
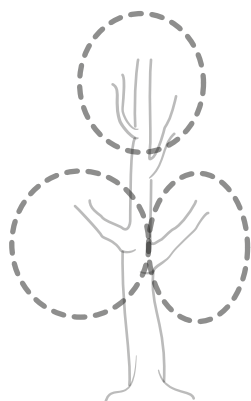
COLORA

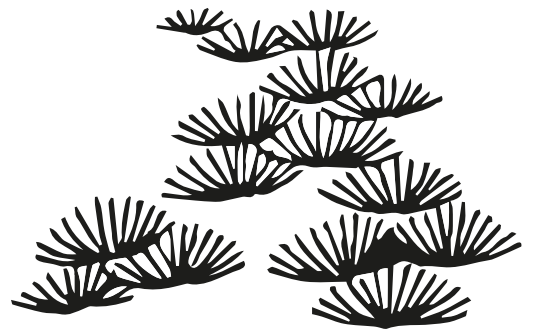
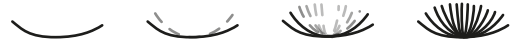
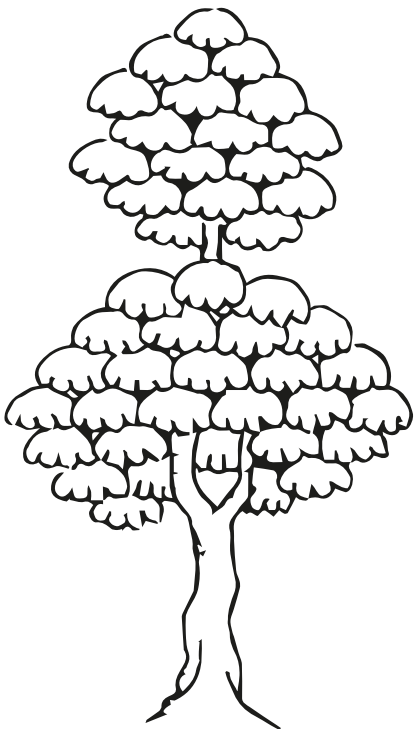
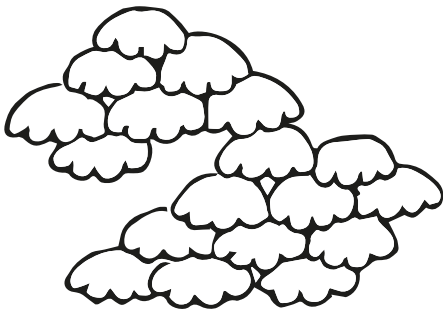


PIANTE



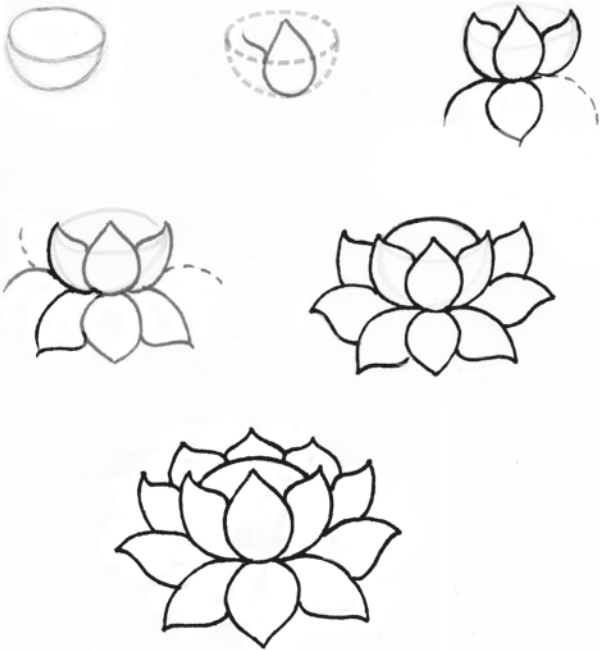
FOGLIE



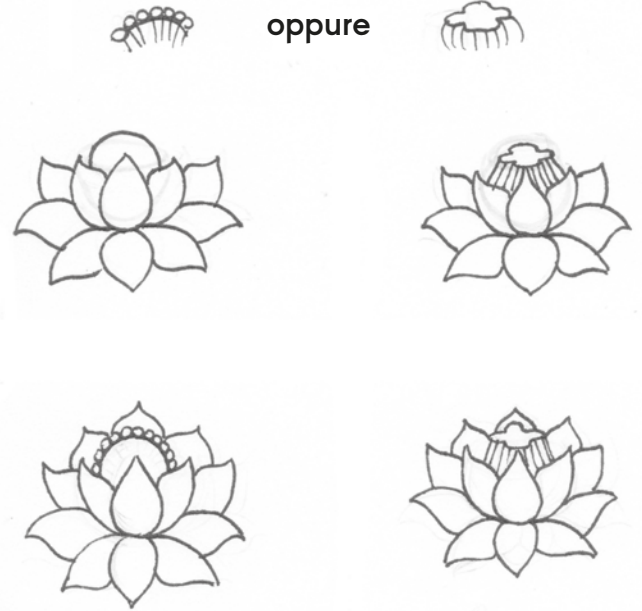


FIORI

(+ ○) + ~

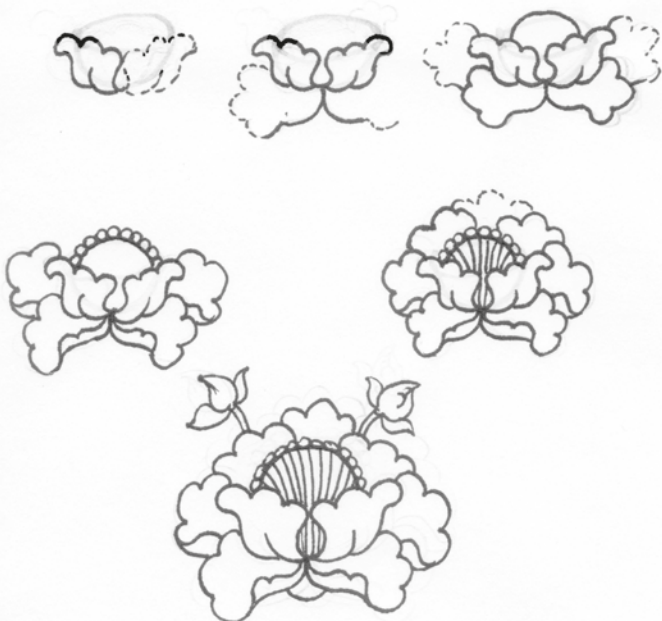


SI PUÒ VARIARE IL FIORE CAMBIANDO LA CORONA AL CENTRO AL POSTO DI ○

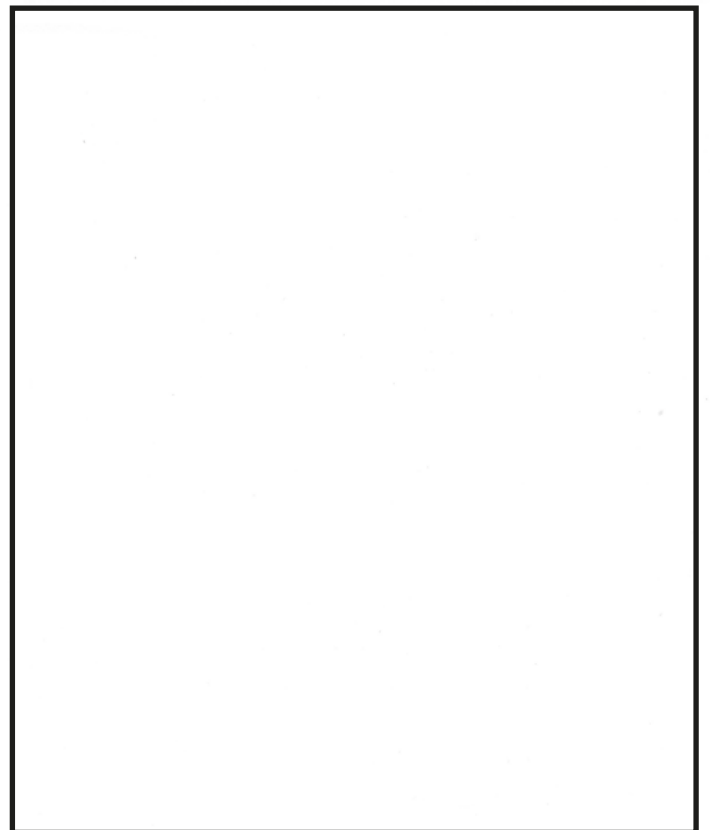


CAMBIANDO IL PETALO
CAMBIA IL FIORE

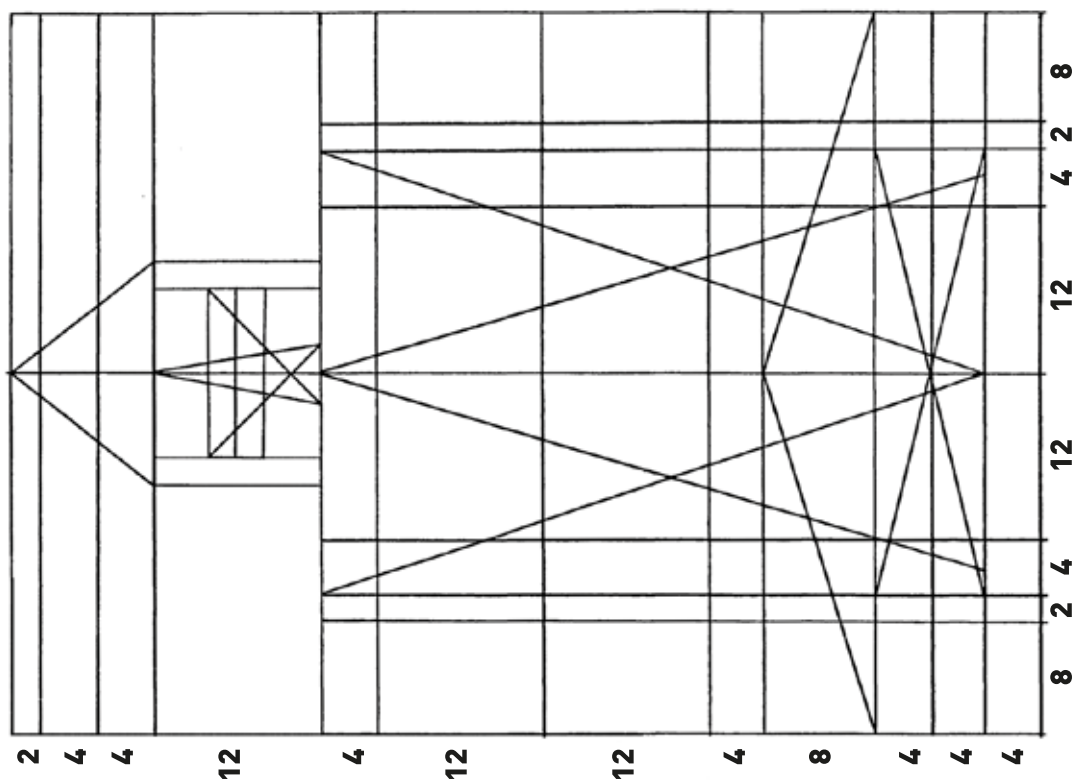
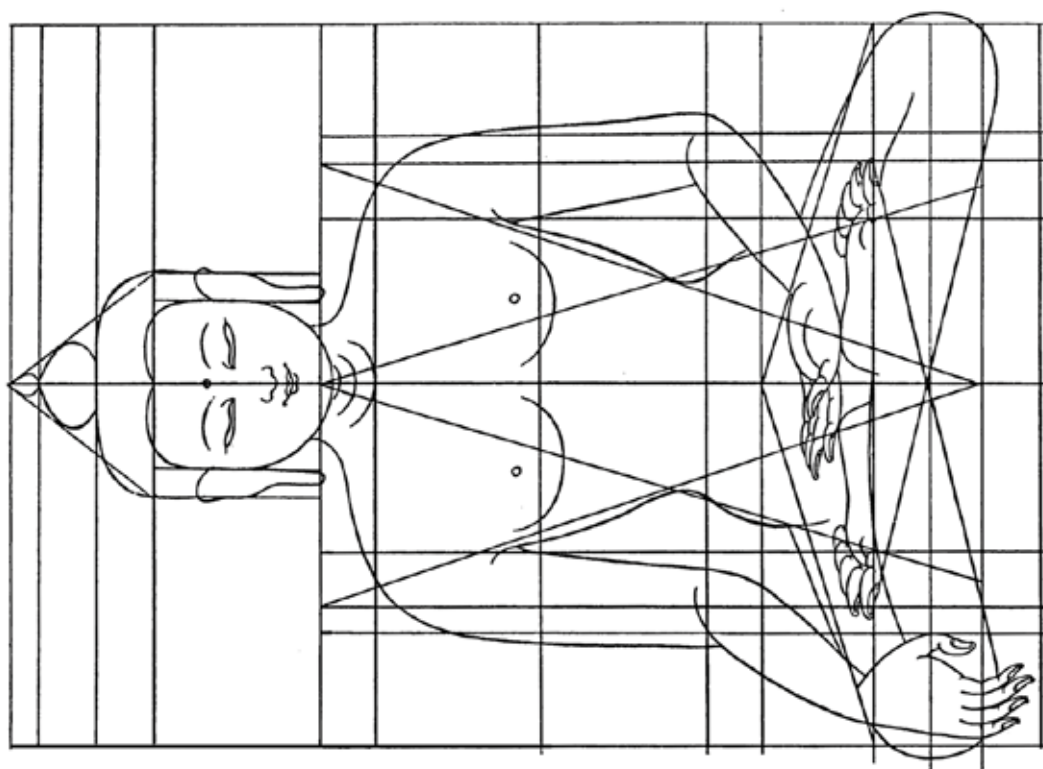
sostituiamo  con 



DISEGNA E COLORA

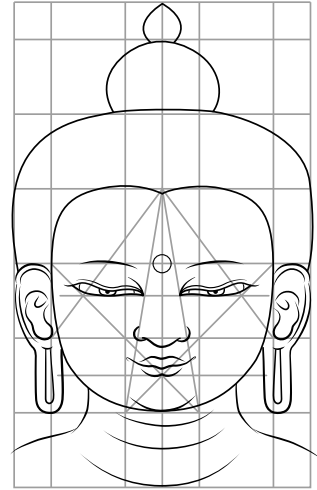
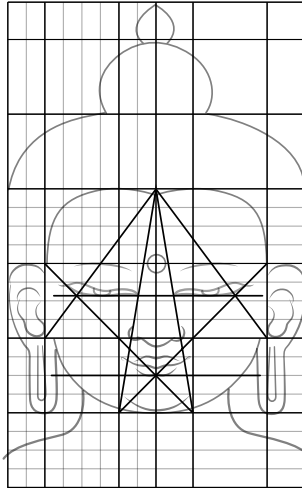
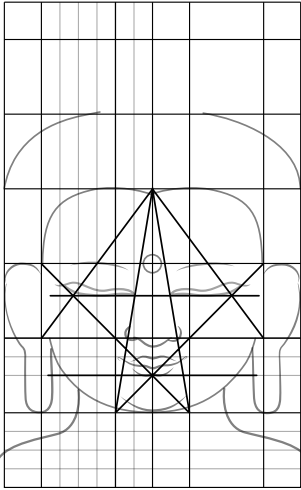
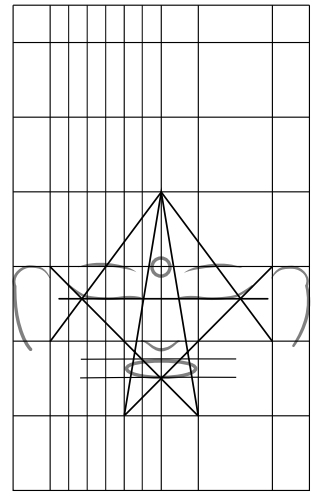
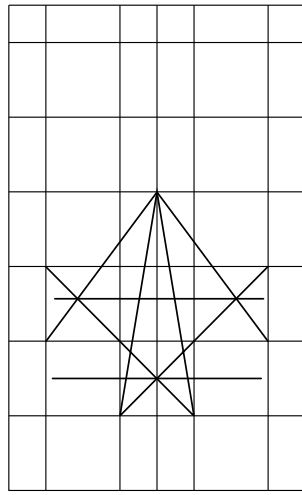
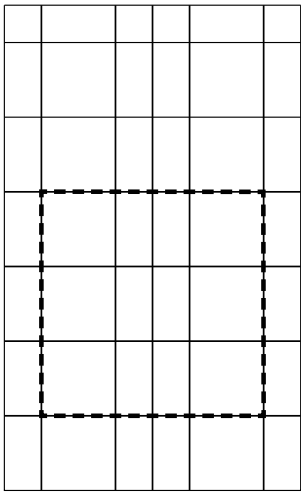


BUDDHA / DISEGNAMO CORPO E VOLTO

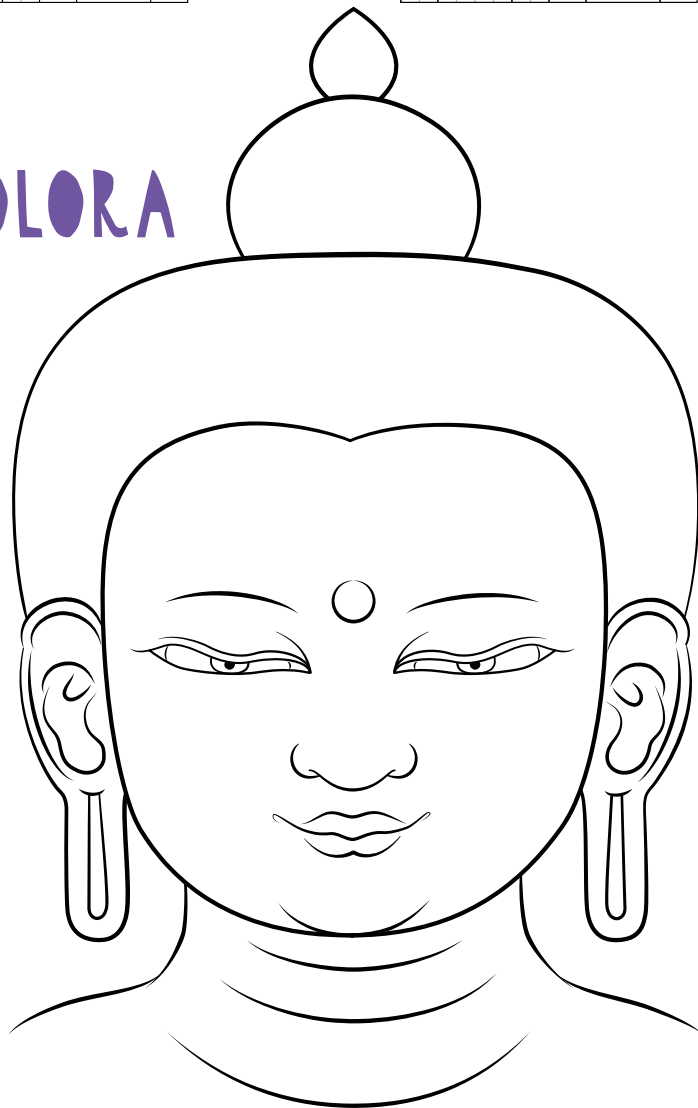


COLORA

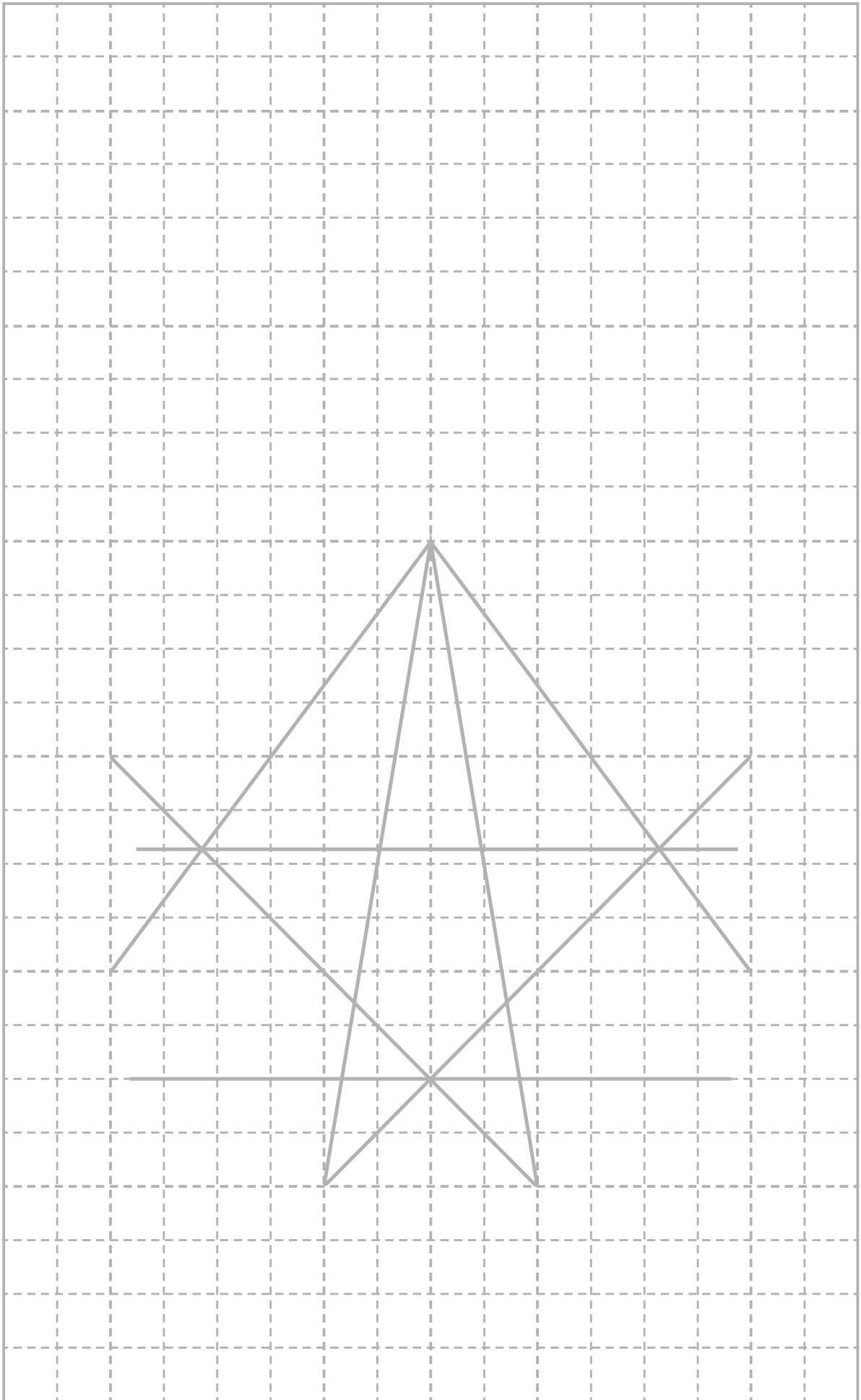




COLORA



DISEGNA TU →



ANIMALI



ANIMALI FANTASTICI*



LUNG-TA

(BANDIERINE DI PREGHIERA)



(MAKARA*)

GARUDA*

CAVALLO

DRAGO*



LEONE

TIGRE

BLU	BIANCO	ROSSO	VERDE	GIALLO	BLU.....si ripete la serie
-----	--------	-------	-------	--------	----------------------------

Progetto Piano Lezioni e Schede

TANITA FERRARI

Fonti Immagini

GEGA LAMA, *Principles of Tibetan Art, Vol. I-II*
Darjeeling, W.B.—India, 1983

Manual Iconography, Tibet

DAVID P. JACKSON AND JANICE A. JACKSON
TibetanThangka Painting, Methods & Materials,
Boulder—Co, 1984

Illustrazioni

TANITA FERRARI

Grafica

FULVIO FERRARI

Curatore

ALEX SIEDLIECKI

2020/MACO All rights reserved



COMUNITÀ
DZOGCHEN
MERIGAR

SPONSORS E PARTNERS



COMUNE DI
ARCIDOSSO



SISTEMA MUSEALE AMIATA



FABBRICA
AMBIENTE
RURALE



REGIONE
TOSCANA



UNIONE
EUROPEA



Unione
Buddhista
Italiana

8 X MILLE

Realizzato con il contributo
dell'Unione Buddhista Italiana

Per ulteriori informazioni o
per effettuare una PRENOTAZIONE contattare:
maco.arcidosso@gmail.com

www.macomuseum.org | maco.arcidosso@gmail.com | Tel. 0564 164 3239

Palazzo della Cancelleria | P.zza del Castello, 1 | Castello Aldobrandesco
58031 Arcidosso (GR)